

Phazzer® Enforcer CEW

TC100 Wireless Data Port Download Software Instructions

Devices needed:

VER: 01-07/20/2012

PC desktop or laptop using Microsoft® operating system.

Phazzer® TC100 Wireless USB Data Port Interface.

New Phazzer® Enforcer for first time program initiation.

Or Phazzer® Enforcer already in service - Download and store evidence data.

Note about battery replacement:

No stored data memory loss will occur during battery replacement or depleted battery charge. However, the timestamp in the Enforcer will be lost and needs to be reset if battery is disconnected or replaced. Observe function steps below for resetting timestamp. If during data download timestamp is lost or incorrect, then replace existing battery with only Phazzer Enforcer recommended replacement batteries.

Description of program language and application when programming or downloading evidence data from Phazzer® Enforcer into PC.

Functions:

Double click or single click on each item below to open window for initial setup or change of information.

1. **TIME** set/get: *Display format "MM / DD / YY" ; "Hour : Min : Sec"*
2. **UNIT#** *Enforcer unit number: set/get: 4 digits (0000~9999)*
Example only: Entering 5678 Phazzer® Enforcer weapon unit is now identified as 5678. Once this number is entered the Enforcer will be known as 5678 from this time forward after number is entered. Any number between 1 and 9999 can be used. Note: All four digits need to be entered even if only using number one.
Example: 5678 : One-thousand Phazzer® Enforcers can be tracked and logged separately on one Phazzer® UI-TC100 wireless downloading system.
Note: Avoid using zeros and only use whole number to minimize software errors.
3. **Connect list:** *Double click UNIT# to connect with this device.*
4. **Download report:** *Show the "DATA" on the edittext.*
5. **Save Report:** *Save the edittext data in a file.*
6. **Print Report:** *Print the edittext data.*
7. **Erase:** *Delete DATA. Use caution not to accidentally erase critical DATA evidence!*
Only Supervisor access should be allowed to erase data after 800 entries of stored Enforcer deployment usage. *(Authorized operator can enter password as acting Supervisor.)*
8. **OpenFile:** *Open the saved file to show on the edittext.*
9. **CLEAR:** *Clear the edittext data.*
10. **Exit:** *Exit the application.*
11. **Warning:** *Warning showing "Data is now full" - Save all data evidence into*

specified file of your choice. **Caution:** By not saving data after warning, full operation of Phazzer® Enforcers ability to function as a **CEW** will be locked out, till all data is saved” on the edittext. For Officers safety all download sequences should be observed.

12. **Login in as Super-user:** “Ctrl+N” to enable “super-user mode” and enter password to login.
13. **Connect USB:** Enable TC100 (Wireless Reader) plugged in PC USB for operation.

- **UI PC program operation for Phazzer® TC100 download from Phazzer® Enforcer**

Main navigation dialog selections after opening program: 1. Main dialog; 2. Time dialog; 3. UNIT dialog; 4. Password dialog.

1. MAIN dialog:

- **Connect list:** Shows the Phazzer® Enforcer ID of available Enforcer(s) now connected – Potential of Enforcer online: 0-9999
- **Edittext:** Will show the evidence DATA information when selected.
- **“TIME”** button: Enable time dialog
- **“UNIT#”** button: Enable UNIT dialog
- **“Download Report”** button: Show the “DATA” on the edittext.
- **“Save Report”** button: Save the edittext data in a pre-selected file.
- **“Print Report”** button: Print the edittext data.
- **“Erase”** button: Delete DATA. **Use caution not to accidentally erase critical DATA evidence!**
- **“OpenFile”** button: Open the saved file to show on the edittext.
- **“CLEAR”** button: Clear the edittext data.
- **“Exit”** button: Exit the application.
- **“Connect USB”** button: Enable TC100 (Wireless Reader) plugged in PC side USB. This will now communicate to Phazzer® Enforcer and ready for program initiation or DATA download.

2. TIME dialog:

- “MM , DD , YY” ; “Hour, Min , Sec” edittext
- **“GET”** button: Get the time information from selected .
- **“SET”** button: Set time information to selected .

3. UNIT dialog:

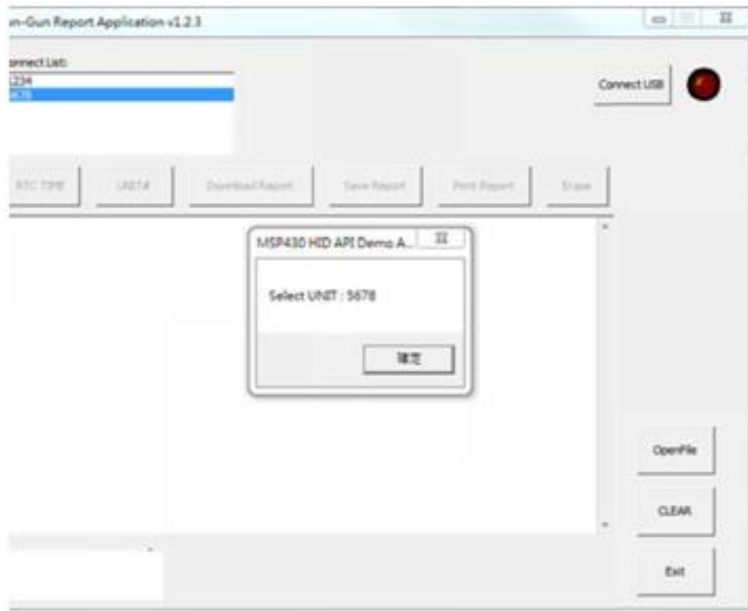
- **“GET”** button: Get ID from selected .
- **“SET”** button: Set ID to selected .

4. Password dialog:

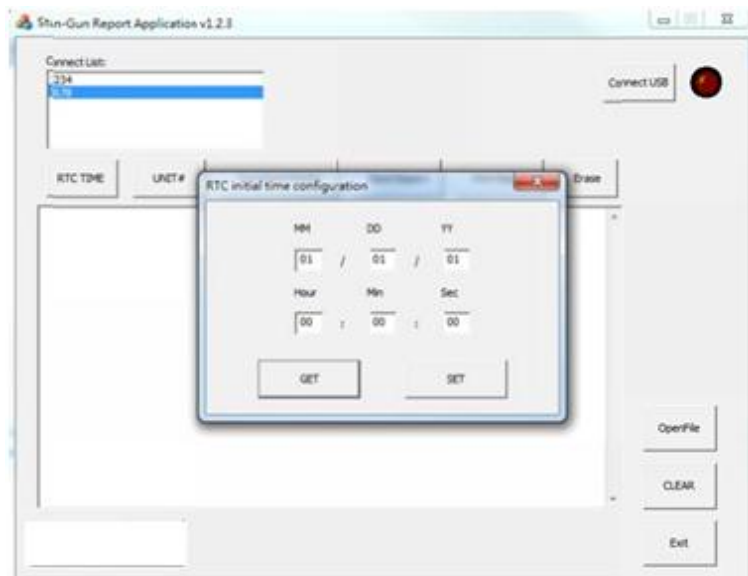
- Dialog for entering password.

Screen shot of Phazzer® UI program

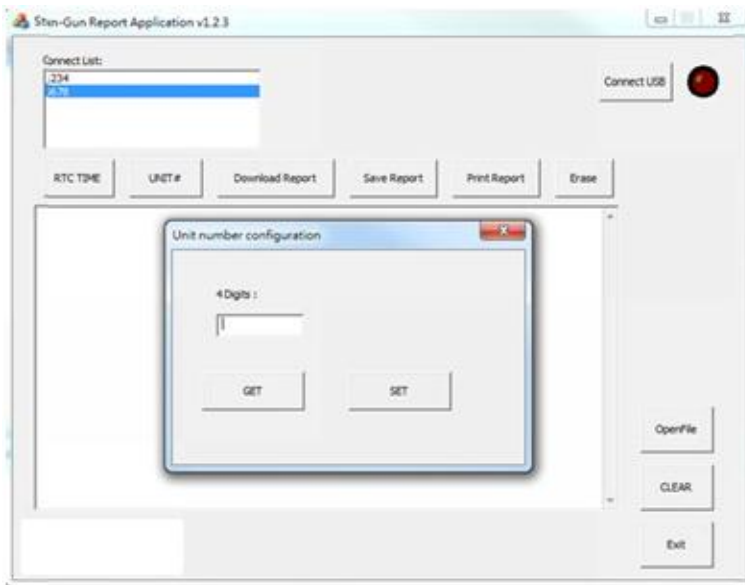
1. Select Phazzer® Enforcer unit to be displayed via the TC100



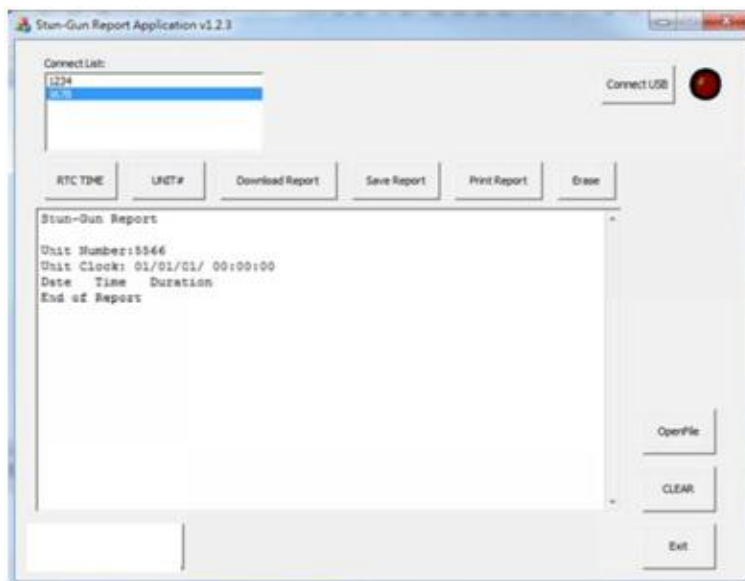
2. TIME button :



3. UNIT# button:

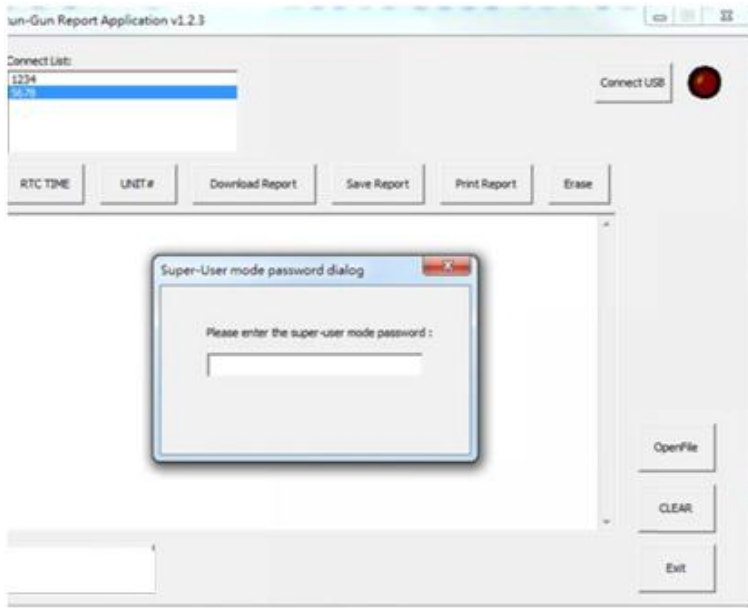


4. Download Report of evidence Data:





5. Password dialog



Instruction of operation note:

This information is based on the version of software at the time of editing. If you are experiencing trouble connecting and downloading evidence data. Please check with Phazzer® Electronics for further instruction or **UI** software version upgrades.

Suggestions:

All data evidence from Phazzer Enforcer should be downloaded immediately and indefinitely stored after any deployment and secured for future reference.

Disclosure:

All efforts have been made to supply correct programming instructions and editing of software. Phazzer Electronics cannot assume responsibility for an error that may occur while downloading of evidence data that result in lost data, or data that cannot be retrieved.

Disclaimer:

Phazzer® TC100 USB wireless interface and the **UI** evidence retrieval software are for sole operation of the Phazzer® Enforcer. No intended use is suggested or recommended for any other product or CEW device.

Caution

During **UI** pre-programming or evidence retrieval from the Phazzer® Enforcer, at any time the software flag Warning is indicating, "Data is now full". Immediately retrieve evidence data and file in document folder for secure storage. If the memory is not cleared, and data storage is still full. Phazzer® Enforcer may not function. All efforts must be made to keep any and all data downloaded on a regular basis to assure proper operation.

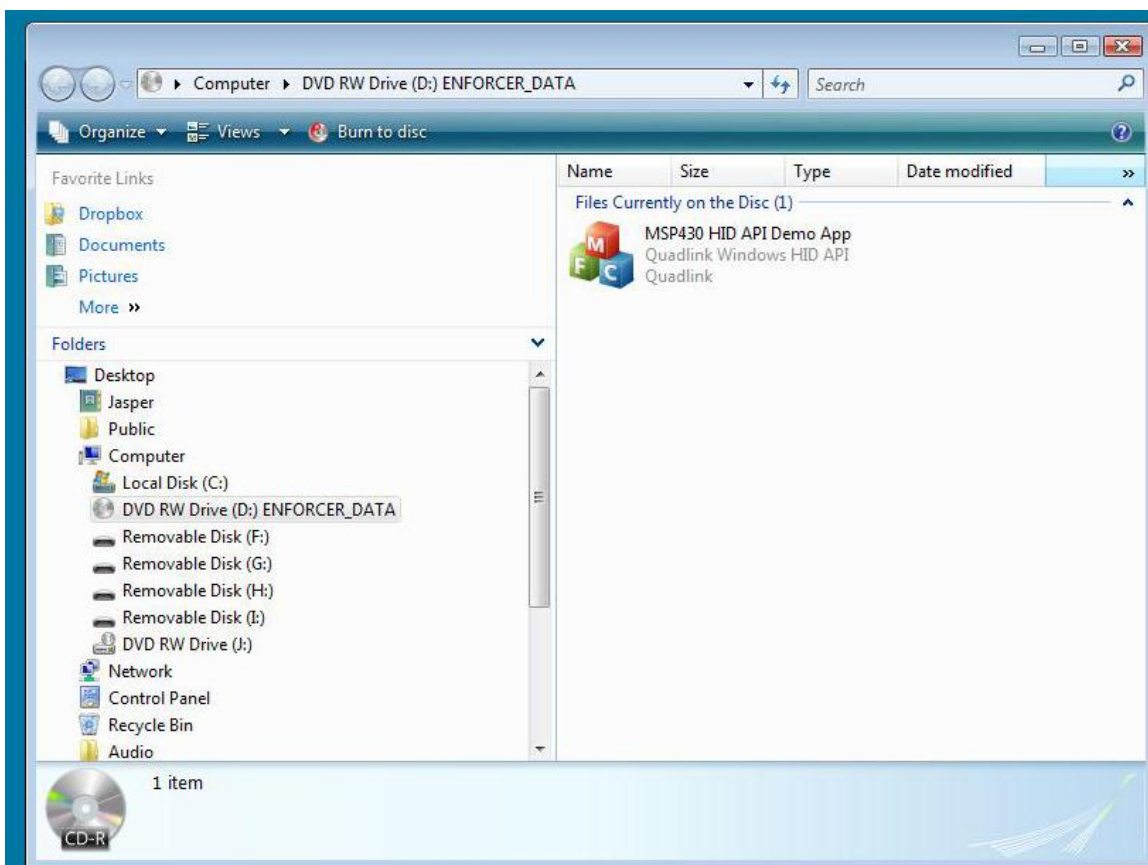
Program Install and Operation of Wireless Data Port for PhaZZer Enforcer

Note 1: Do not plug-in USB data port before software is installed!



[A]

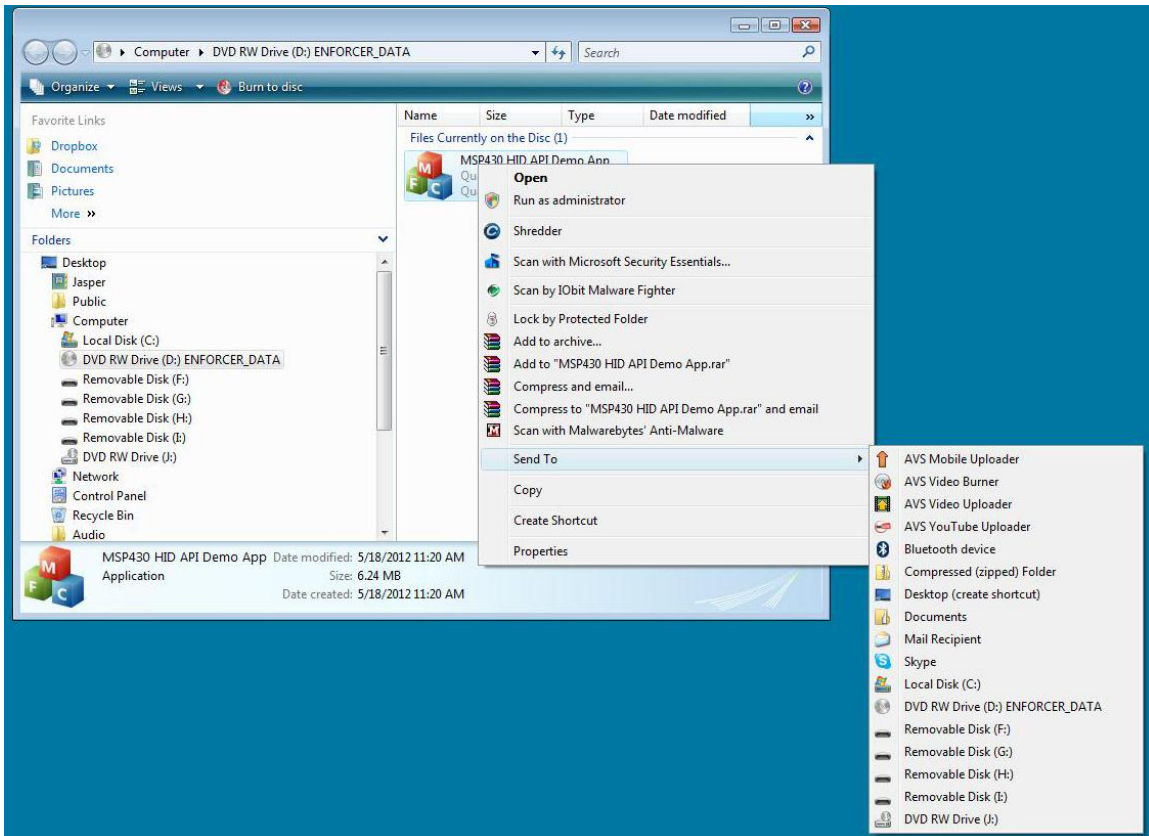
Data Port Program has been verified with Window Operating Systems XP, Vista and Windows 7. Install of program and operation did not show any signs of errors or trouble initially loading. If you have any trouble loading, or running the data port program. Turn off any anti-virus software or windows safety features (such as pop-up blockers) and try again.



[B]

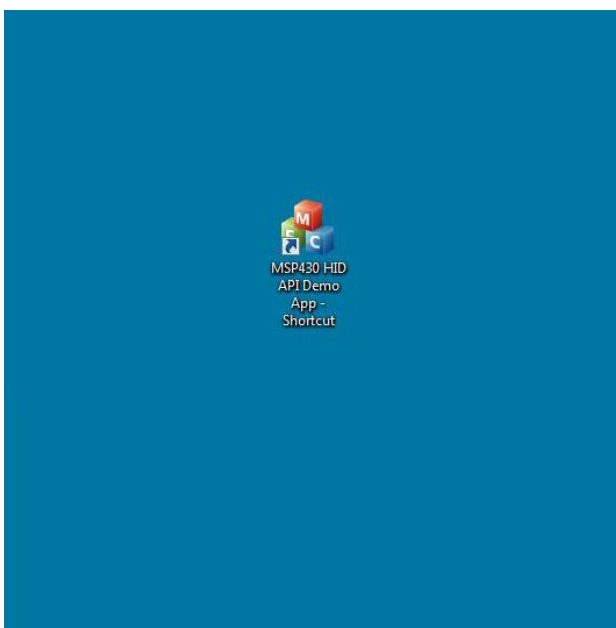
1: Install Software from CD disk onto Desktop or into Document Folder.

2: Install from CD by placing CD into disk reader / player and wait for the program to load.



[C]

3: Place mouse-pointer over program file and right mouse click to open. Now send / load program to where you won't to access it for later. Suggestions are Desktop or Personal Document Folder, or both.



[D] Example showing Data Port

Program on Desktop.

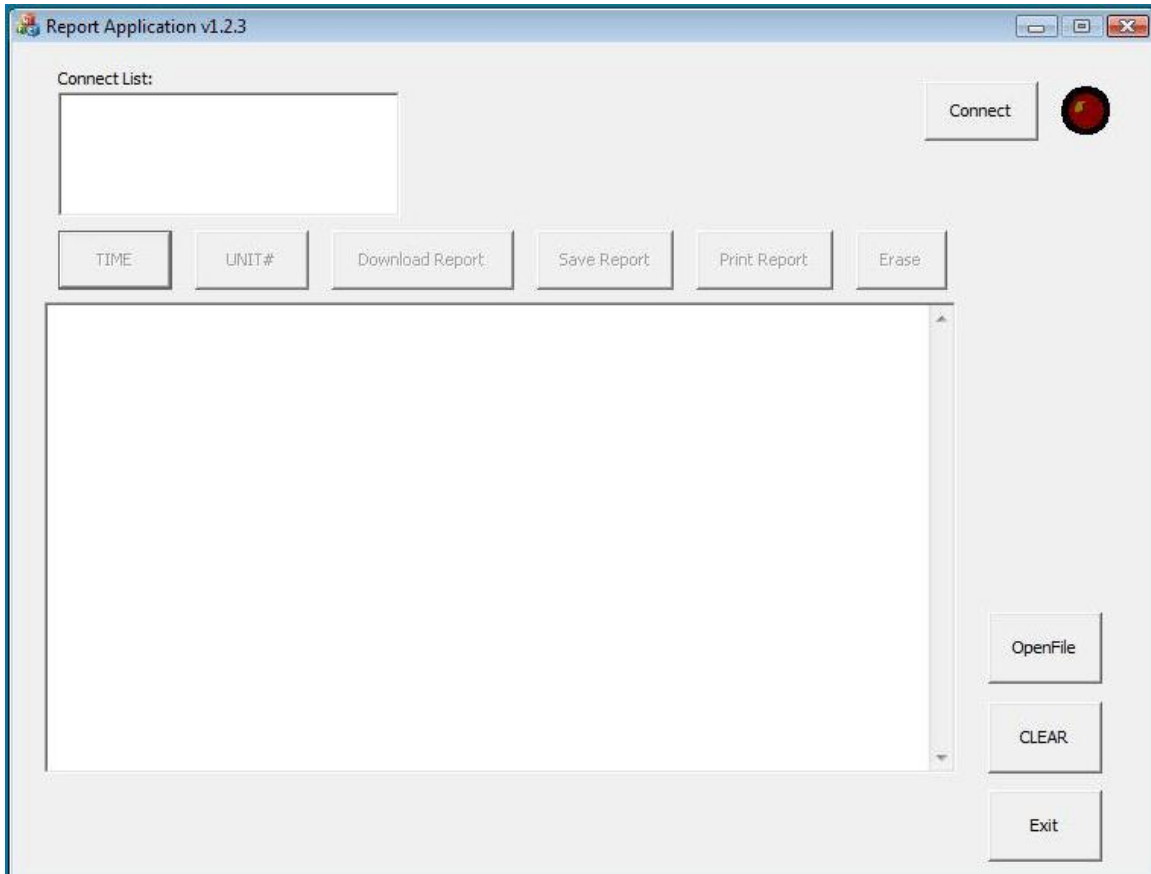


4: Now plug-in USB data port reader TC-100. Wait about thirty-seconds for drivers to find data port and load. You should see at bottom right “Windows looking, finding and acknowledging install is complete”. If not, un-plug USB data port reader and reinstall once again. If Windows Operating System still cannot find data port reader, then find another USB port to plug-in and operate from.

Note 2: (orange) reset button on data port reader. This may assist in helping Windows Operating System to find data port reader. Only use if program locks-up, or cannot install properly. Otherwise this button is not necessary.

5: Now Double-click on Icon (Data Port Program) to begin operation. See [D] for Icon example.

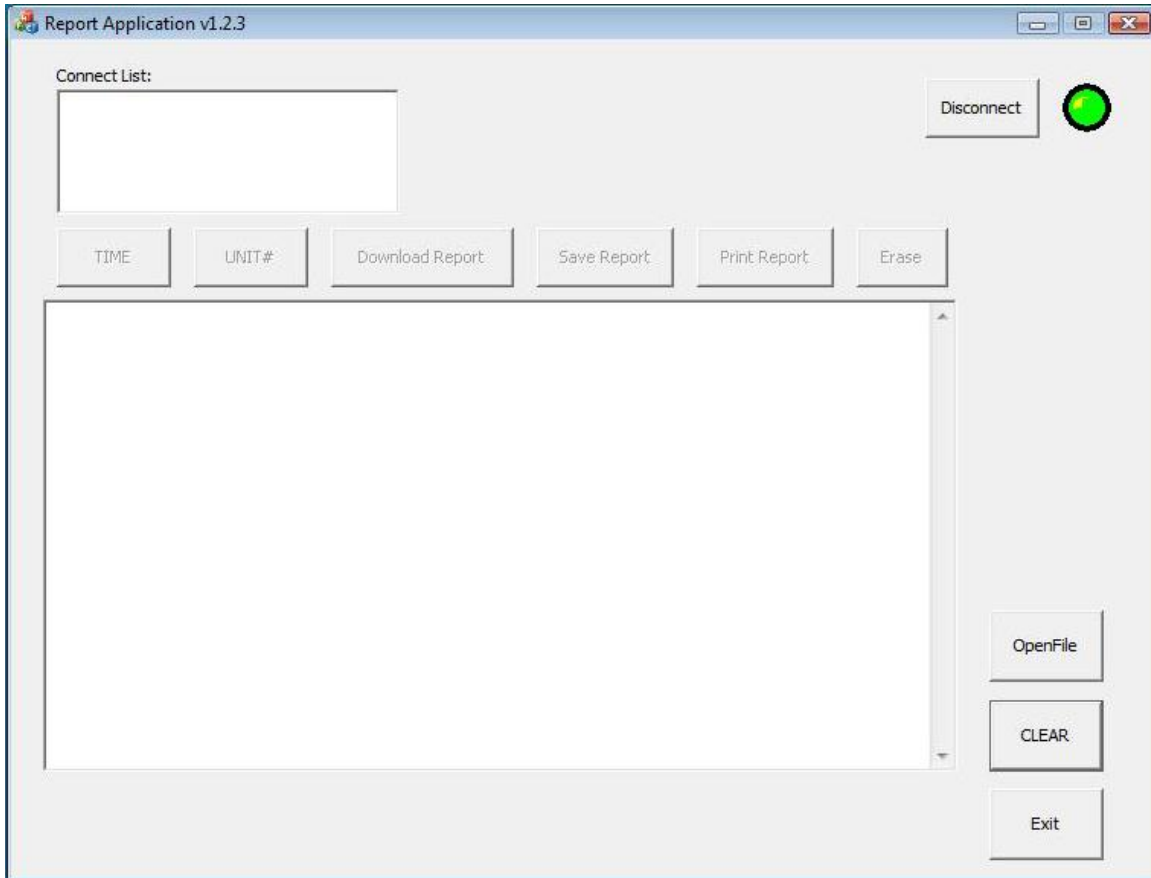
Window below will open-up to begin after clicking on Icon. See [F]



[F]

6: Click on [CONNECT] button left of RED light for program to engage with data port reader.

7: When program engages with data port reader, indicator light will turn “GREEN”. When green light is lit, program and reader are working correctly and is ready for downloading data from PhaZZer Enforcer. See [G]

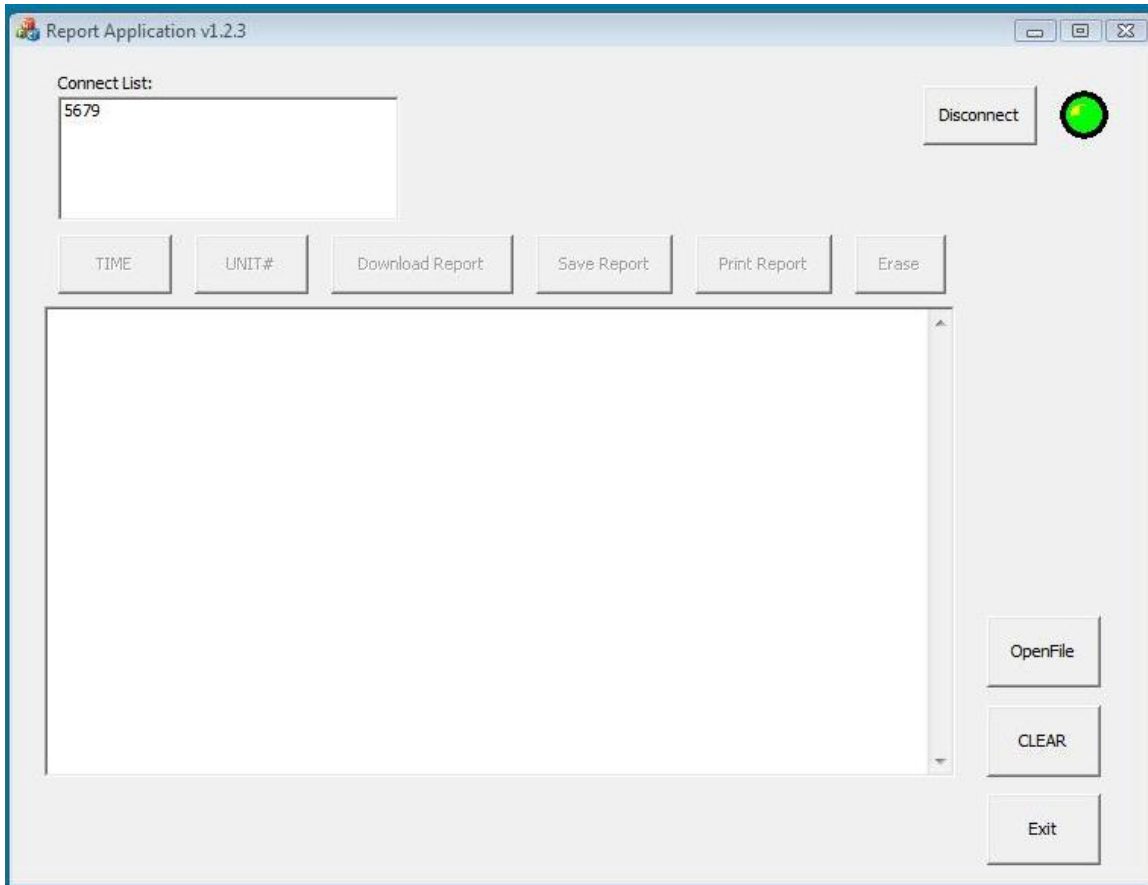


[G]

8: Turn on PhaZZer Enforcer and wait five-seconds for data port reader to communicate with Enforcer and show ID number of Enforcer in “Connect List” box. See [I].



[H] Showing Enforcer is on (Safety-up) and battery is charge and ready for download.



[I]

Note 3: Example being given has already been previously tagged with identification number #5679.

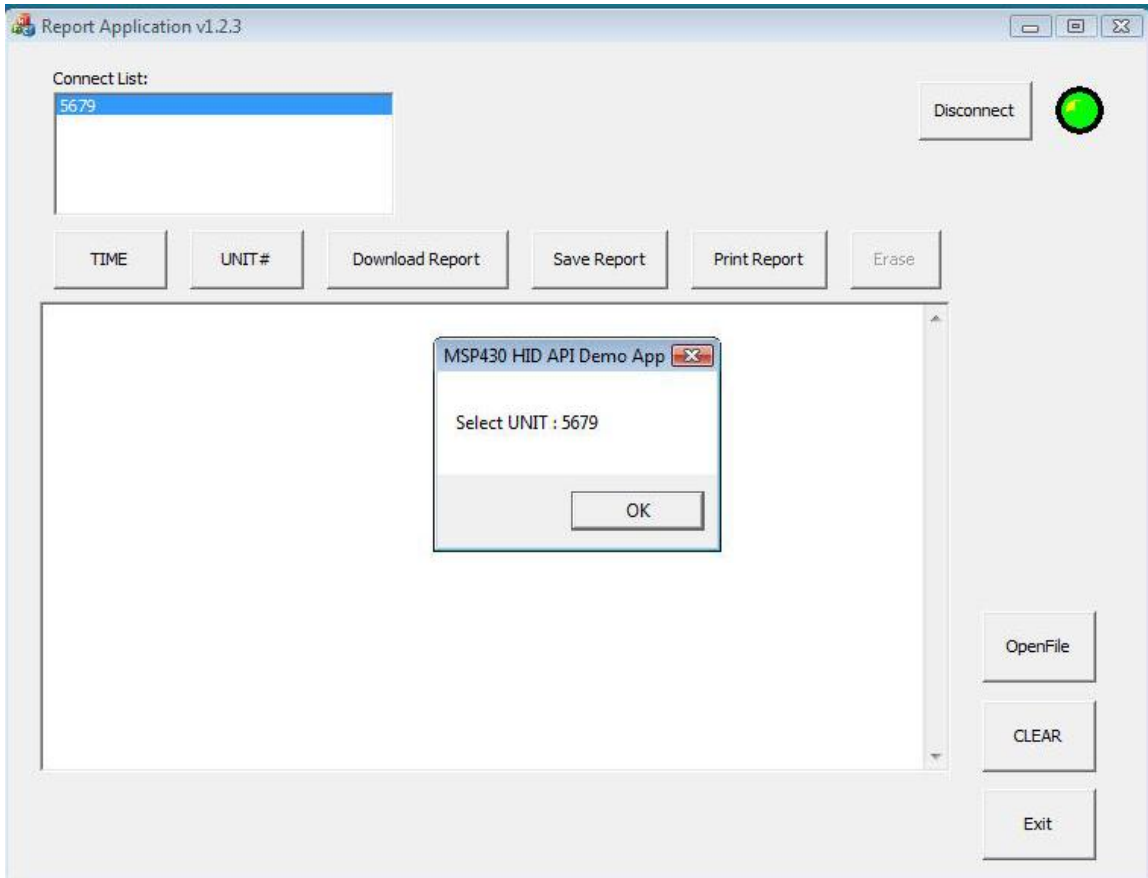
When ID number is showing in “Connect List” box, it is an indication that the system is working and communicating with the Enforcer. If Enforcer is new and needs initialized for a first time-setup. See - *Phazzer Enforcer Initialization Setup Instructions*.

Note 4: Avoid using zeros for ID tags. Use whole number like example giving to avoid software errors.

Note 5: Battery replacement:

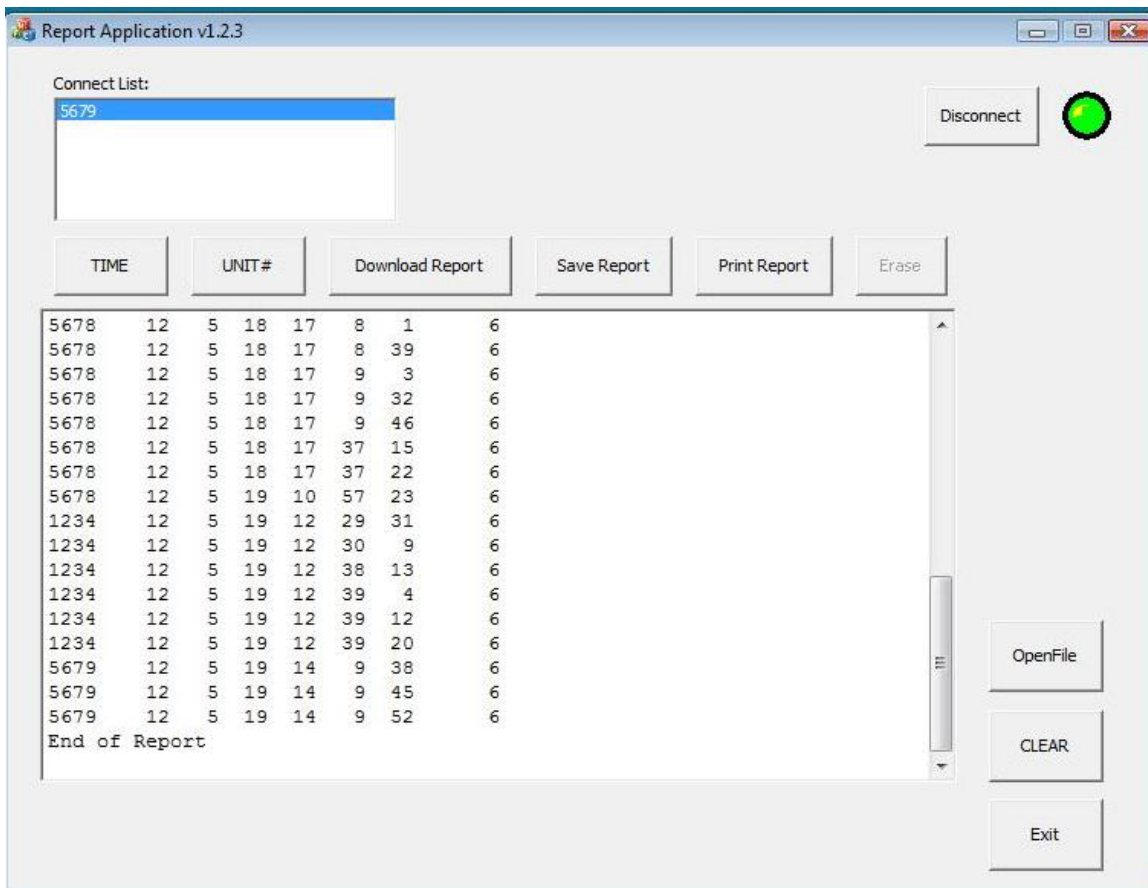
No stored data memory loss will occur during battery replacement or depleted battery charge. However, the timestamp in the Enforcer will be lost and needs to be reset if battery is disconnected or replaced. Observe function steps below for resetting timestamp. If during data download timestamp is lost or incorrect, then replace existing battery with only Phazzer Enforcer recommended replacement batteries.

9: Now double-click on [ID number] in “Connect List” box to start the first step of downloading. See [J]



[J]

10: Then click “OK” on [SELECT UNIT] #5679 to login.



[K]

11: Now click on [DOWNLOAD REPORT] to view data stored from past usage of Enforcer.

Note 6: When connection is made the blue-highlighted ID number will flicker; indicating communication is open with Enforcer and operating.

- When you click on [SAVE REPORT], it will save data to where program is stored. Example: If you placed data port program in a “Document Folder” then the stored data will be in that document location. Past data can be retrieved by clicking [OPEN FILE]. Past logged files will open up in Data Port window. If you need to copy data, you can cut and paste onto MS Word or MS Excel.
- [PRINT] Print Report will transfer data to your printer.
- [TIME] and [UNIT] buttons are for initial setup. Or changing of ID number of Enforcer.
- [OPEN FILE] Will show location and files saved data from past storage.
- [CLEAR] will clear window showing downloaded data.
- [EXIT] will end connection with ID of Enforcer being read.
- [DISCONNECT] will end communication with all Enforcers being read.

Information below in red is my test run. I will make a report of my test run and issue it.

Data examples from past storage:

Unit Number: 5679

Unit Clock: 12/5/26/ 8:15:48

Unit	Date	Time	Duration
1234	0 1 1 0 0 5	6	
1234	12 5 18 16 9 28	6	
1234	12 5 18 16 9 36	6	
1234	12 5 18 16 9 43	6	
5678	12 5 18 16 15 50	6	
5678	12 5 18 16 16 25	6	
5678	12 5 18 16 24 21	6	
5678	12 5 18 16 24 30	6	
5678	12 5 18 16 24 38	6	
5678	12 5 18 16 45 47	6	
5678	12 5 18 16 45 55	6	
5678	12 5 18 16 46 2	6	
5678	12 5 18 16 46 11	6	
5678	12 5 18 16 47 39	6	
5678	12 5 18 16 47 46	6	
5678	12 5 18 16 47 53	6	
5678	12 5 18 16 48 2	6	
5678	12 5 18 16 57 22	6	

5678	12	5	18	16	57	29	6
5678	12	5	18	16	57	35	6
5678	12	5	18	16	57	44	6
5678	12	5	18	17	7	38	6
5678	12	5	18	17	8	1	6
5678	12	5	18	17	8	39	6
5678	12	5	18	17	9	3	6
5678	12	5	18	17	9	32	6
5678	12	5	18	17	9	46	6
5678	12	5	18	17	37	15	6
5678	12	5	18	17	37	22	6
5678	12	5	19	10	57	23	6
1234	12	5	19	12	29	31	6
1234	12	5	19	12	30	9	6
1234	12	5	19	12	38	13	6
1234	12	5	19	12	39	4	6
1234	12	5	19	12	39	12	6
1234	12	5	19	12	39	20	6
5679	12	5	19	14	9	38	6
5679	12	5	19	14	9	45	6
5679	12	5	19	14	9	52	6
5679	12	5	26	6	55	43	6
5679	12	5	26	7	41	21	6
5679	12	5	26	7	41	37	6
5679	12	5	26	7	41	47	6
5679	12	5	26	7	44	8	6
5679	12	5	26	7	46	12	6
5679	12	5	26	7	46	19	6
5679	12	5	26	7	46	24	6

1. What is a data port.

Optional data port is for downloading and storing any recorded incident deployment information of the Phazzer Enforcer, to permanently document any electrical discharge trigger pulls of the Phazzer Enforcer in a timestamp format.

2. Why do we need it.

Recorded information can be stored and used as evidence-containing electro-dart energizes time duration data, as well as the time and date of use information. This storable retrievable information is useful for permanent evidence documentation of the Phazzer Enforcer that may be necessary for possible future legal implication requiring court actions.

3. Why is ours superior or different.

Phazzer Enforcer data port download operation offers wireless data transfer without cable operation. This wireless concept over other manufactures enables quick and easy access to stored information in the Phazzer Enforcer. One Phazzer Enforcer USB data port transceiver can download one thousand Phazzer Enforcers one at a time, or in multiple successions, thus saving time by viewing all Phazzer Enforcer data information within a thirty-foot radio range of the USB transceiver plug into a PC computer. Wireless data transfer also offers time and cost savings by avoiding disassembly and reassembly of battery compartments required by other competing CEW weapons during routine maintenance, safety checks and initial startup and identification registration. This disassembly of the battery compartment required by other manufactures can corrupt the operating program and stored data that is known to render their CEW inoperable and require service.